

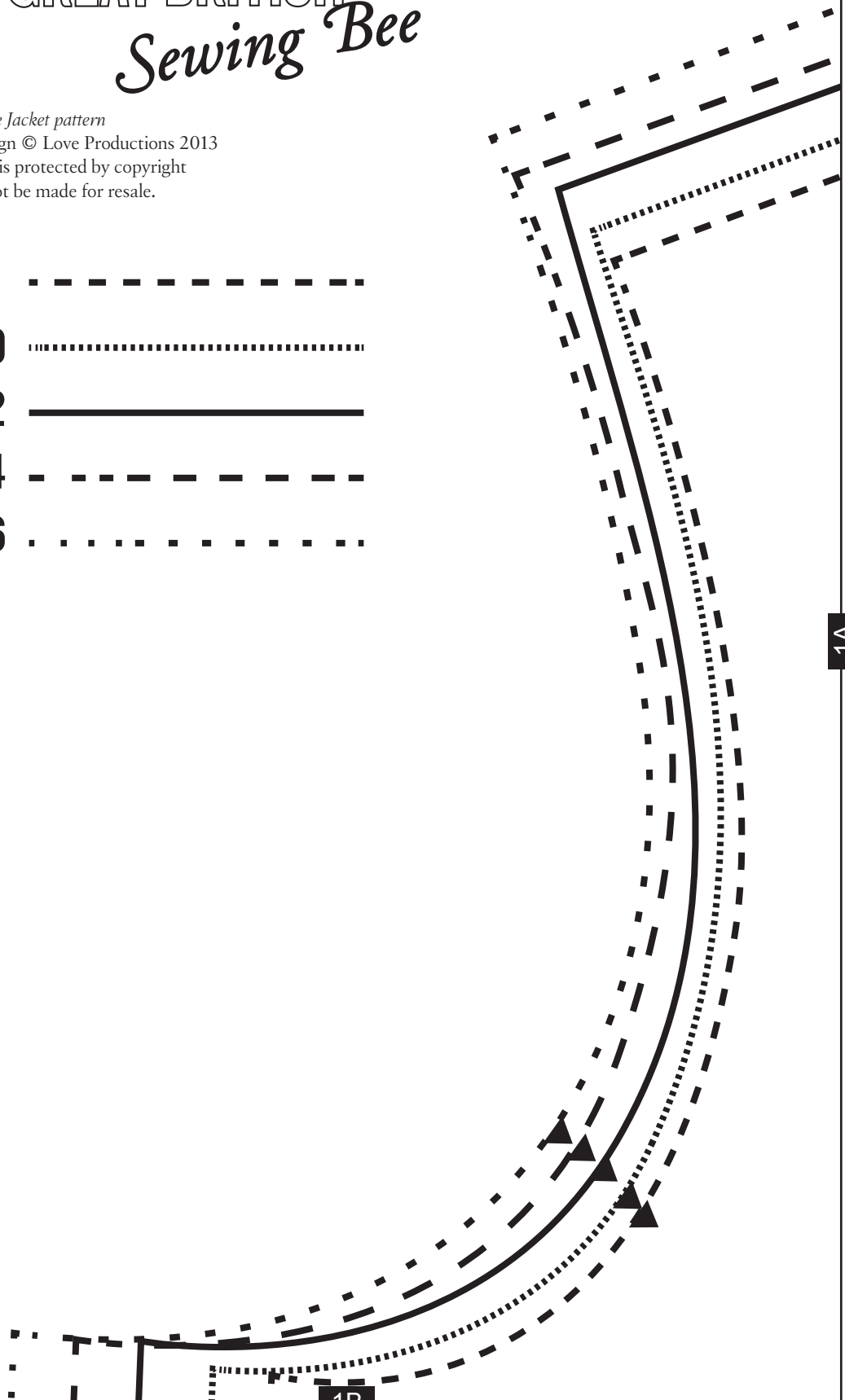
THE GREAT BRITISH *Sewing Bee*

Edge to Edge Jacket pattern

Project design © Love Productions 2013

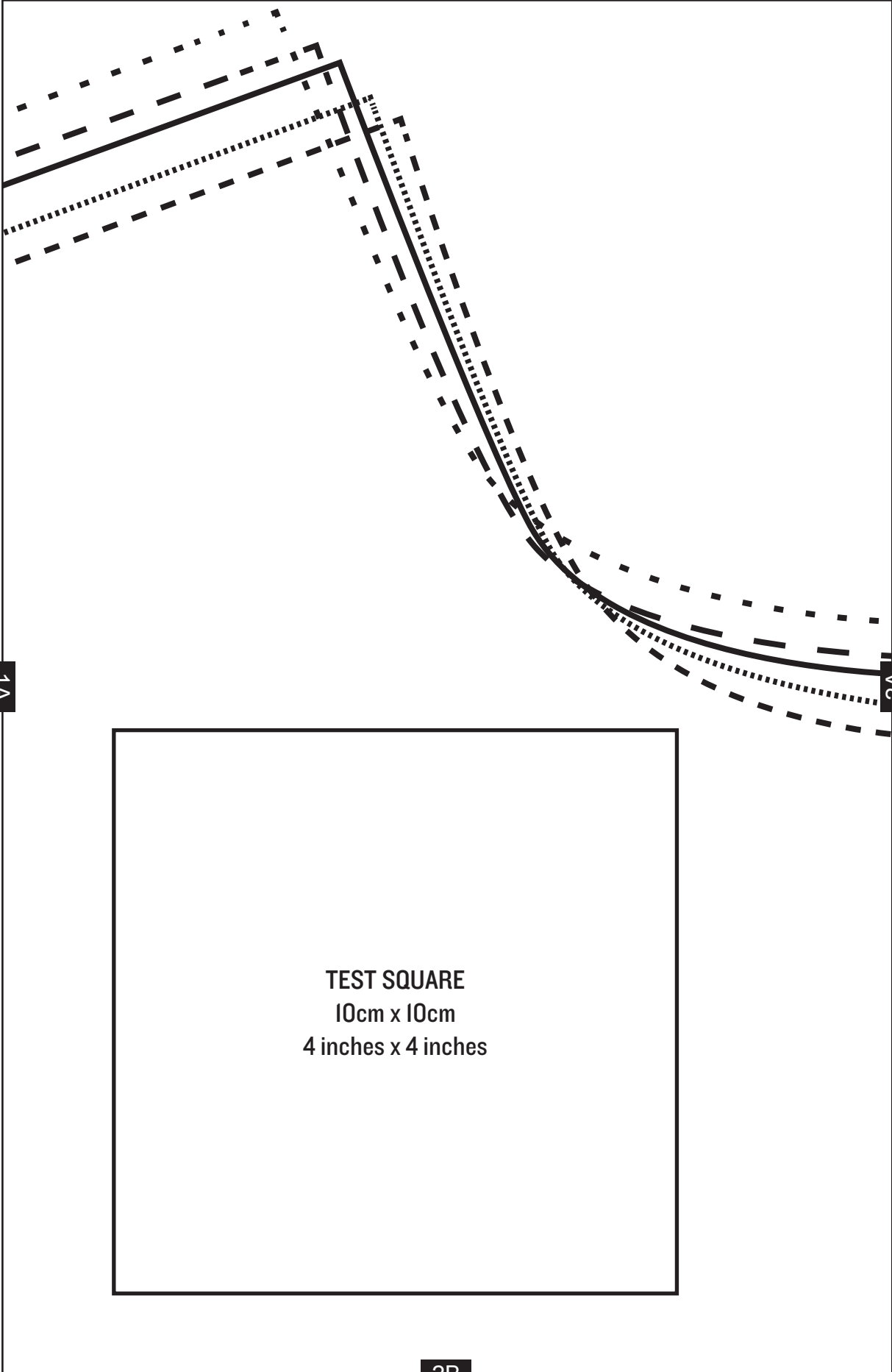
This design is protected by copyright
and must not be made for resale.

- 8 - - - - -
- 10
.....
- 12 —————
- 14 - - - - -
- 16



1A

1B

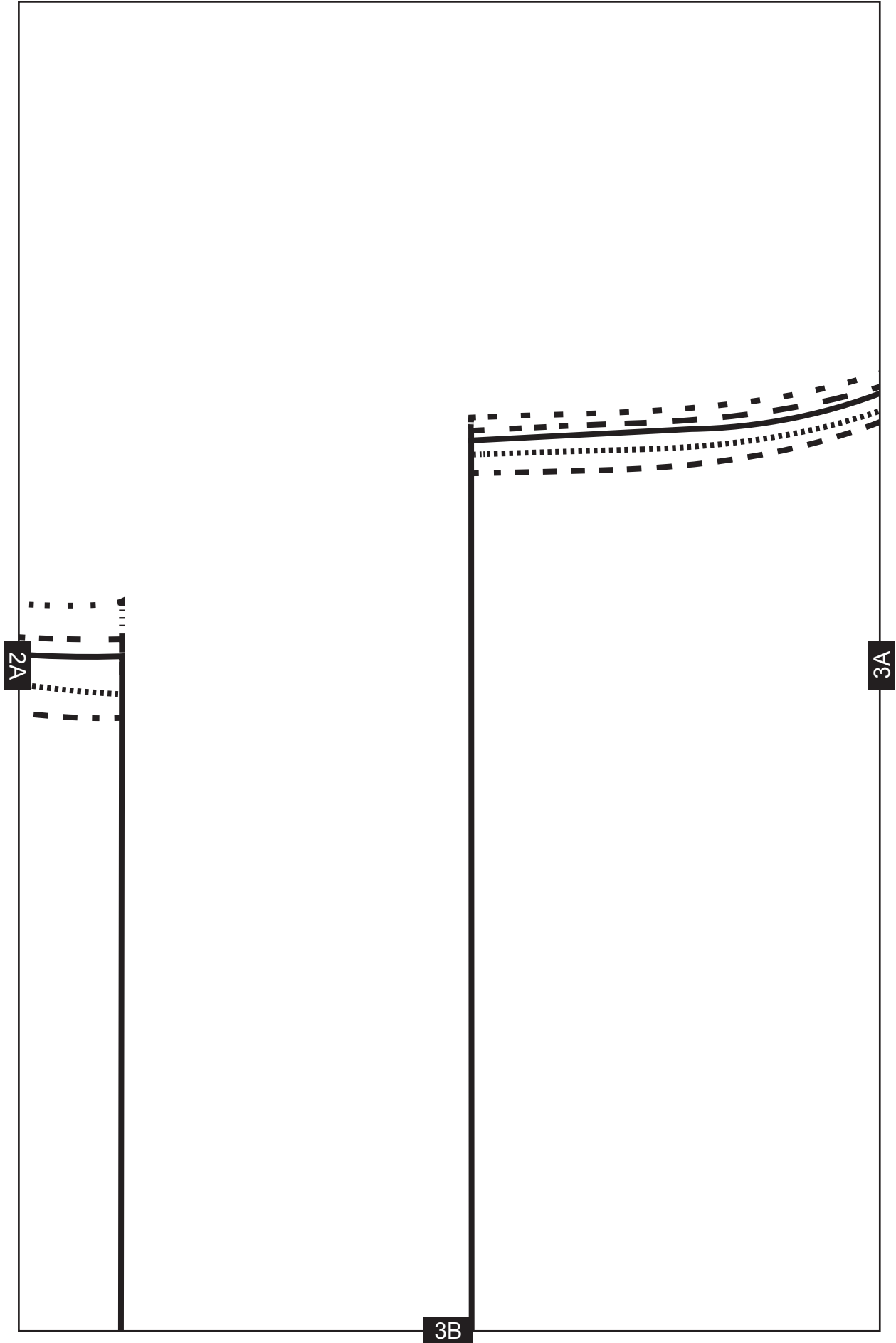


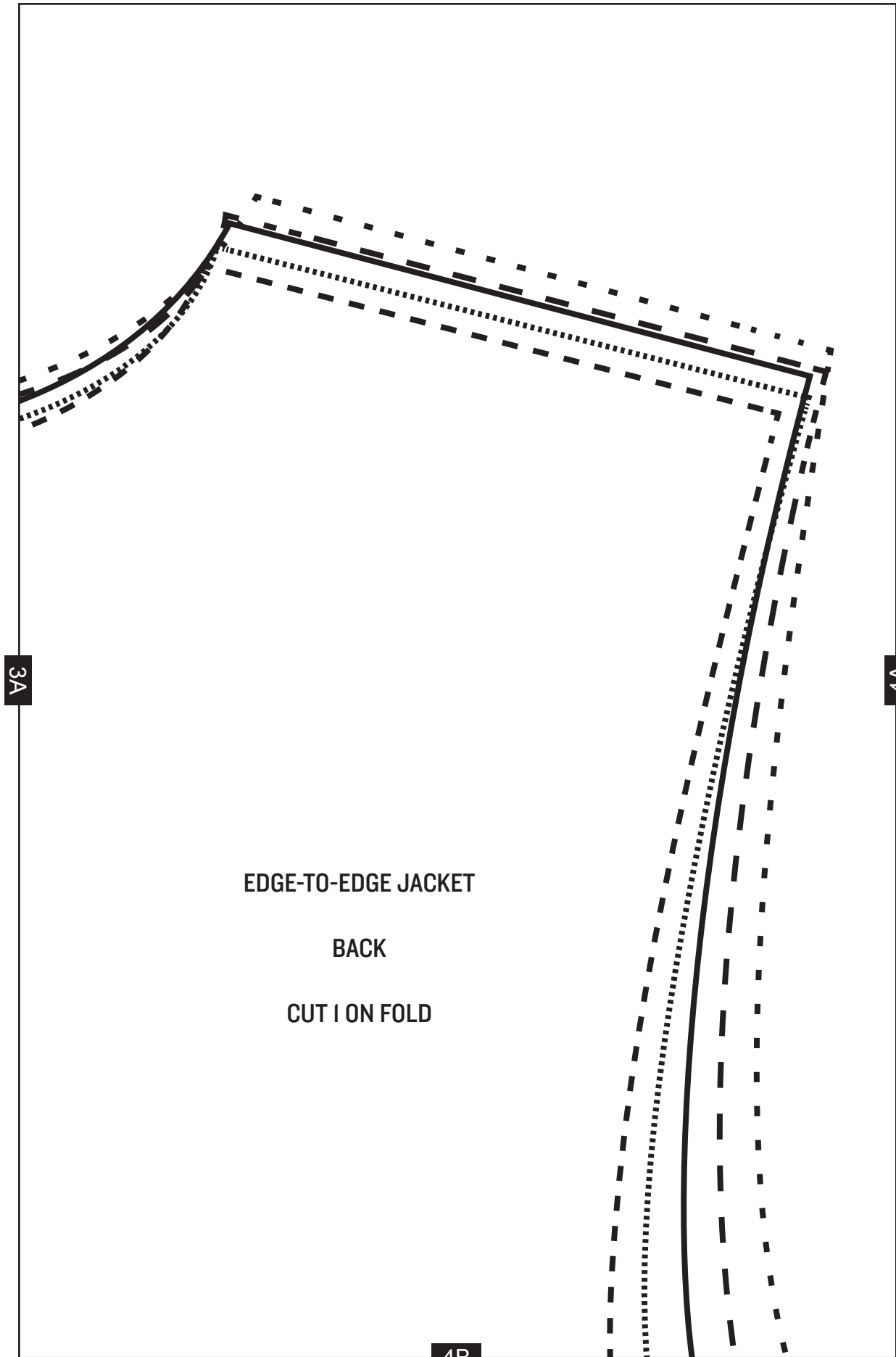
1A

2A

2B

TEST SQUARE
10cm x 10cm
4 inches x 4 inches





3A

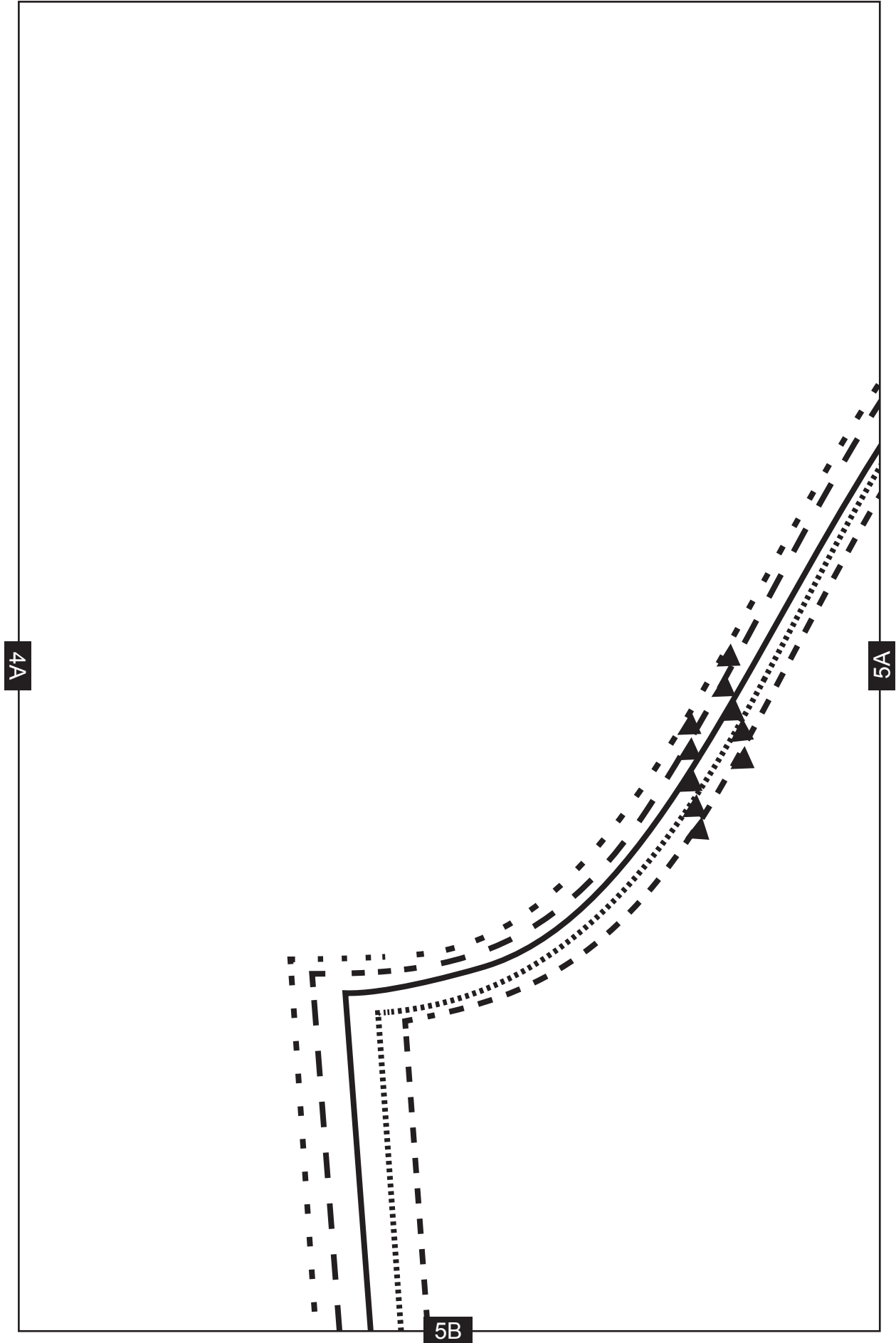
4A

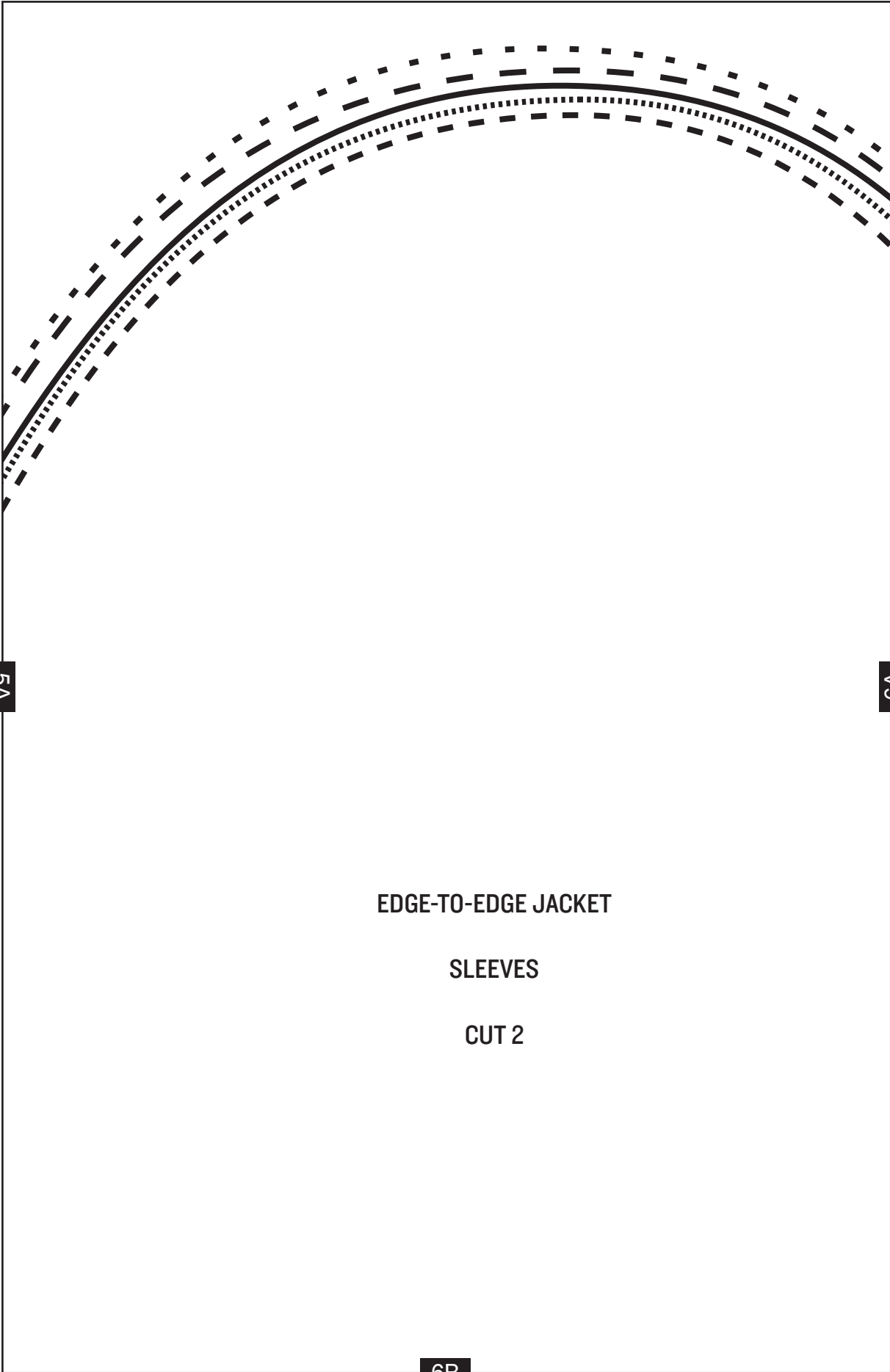
EDGE-TO-EDGE JACKET

BACK

CUT 1 ON FOLD

4B





5A

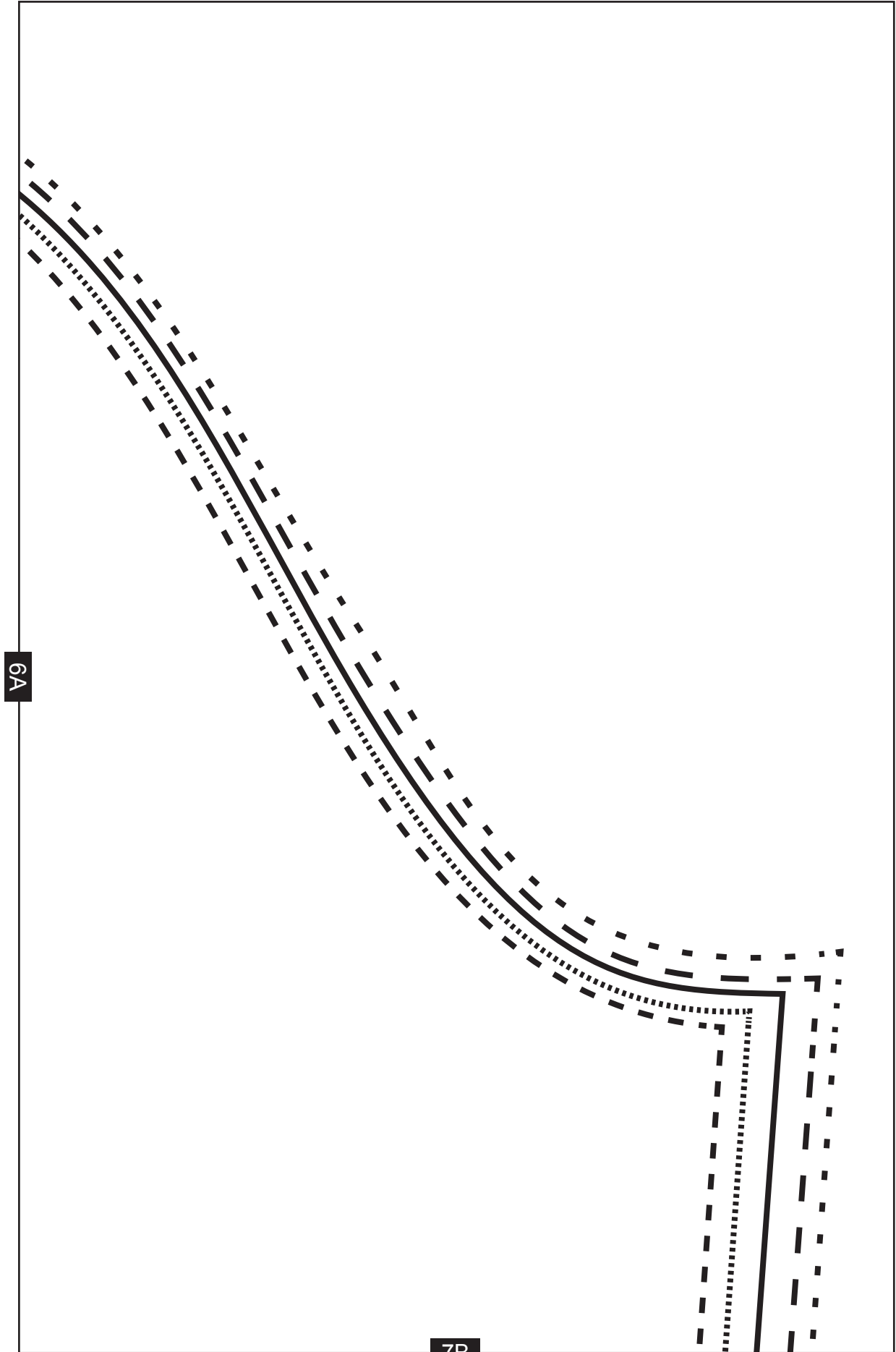
6A

EDGE-TO-EDGE JACKET

SLEEVES

CUT 2

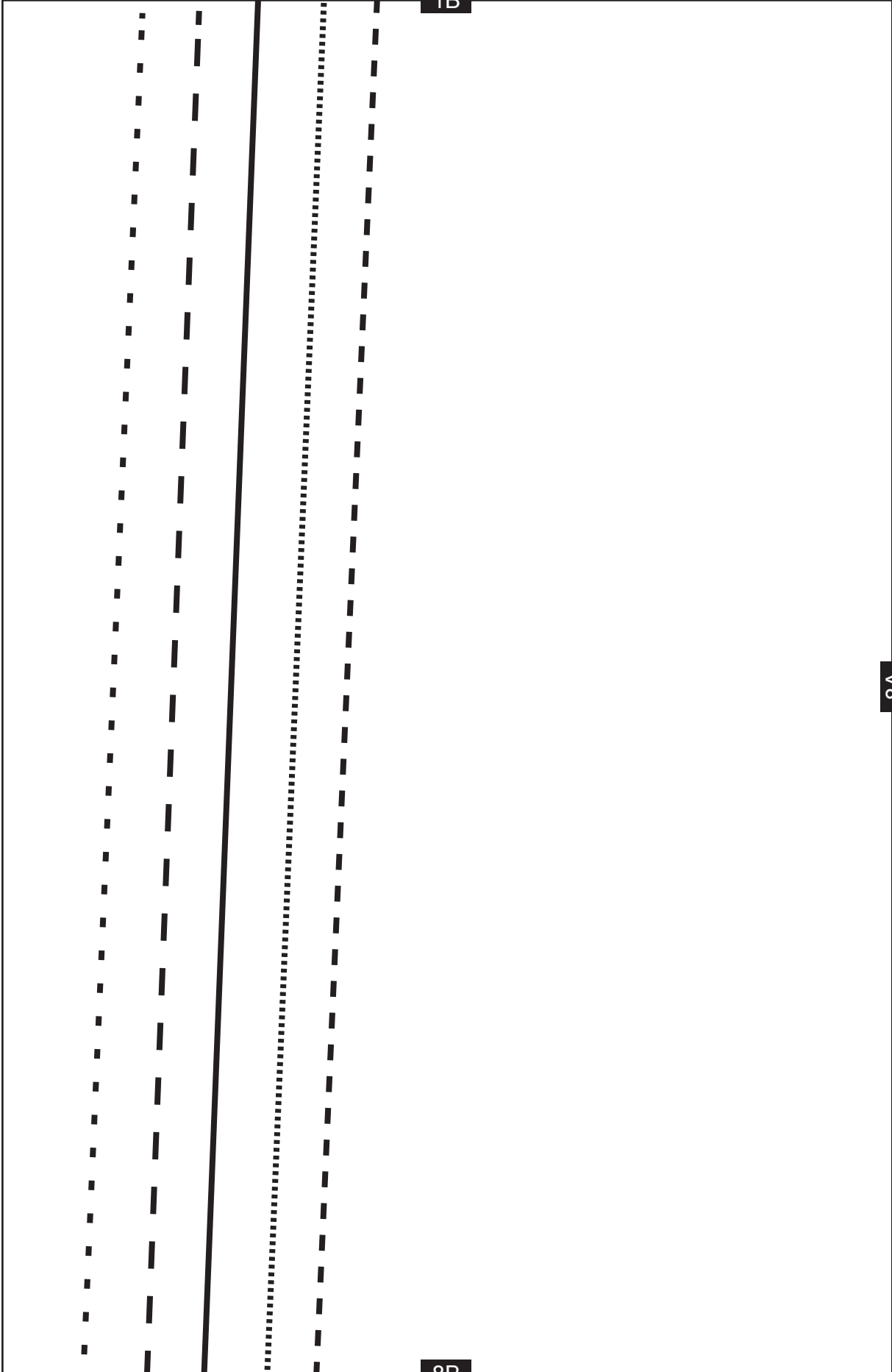
6B



6A

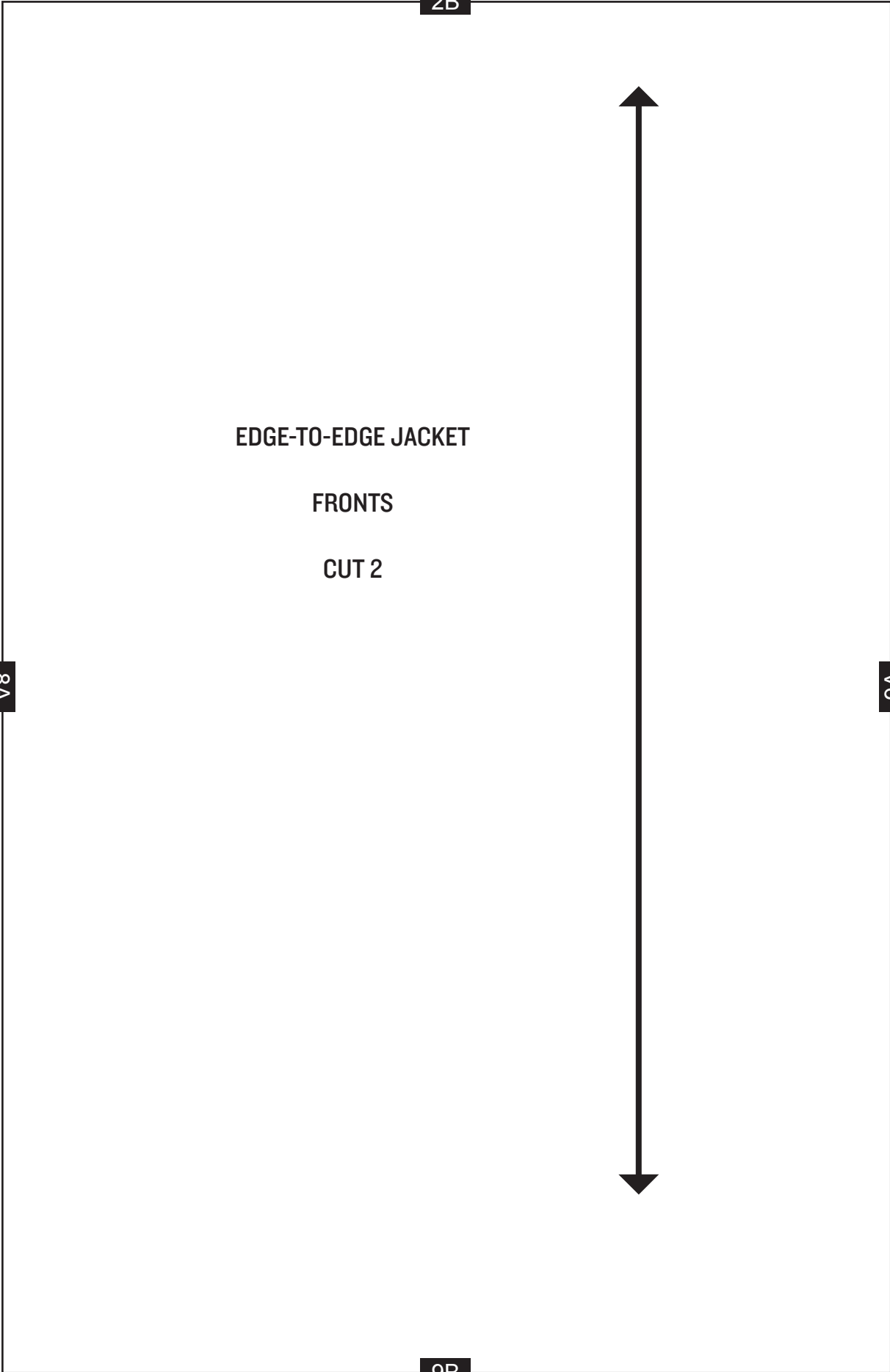
7B

1B



8A

8B



2B

EDGE-TO-EDGE JACKET

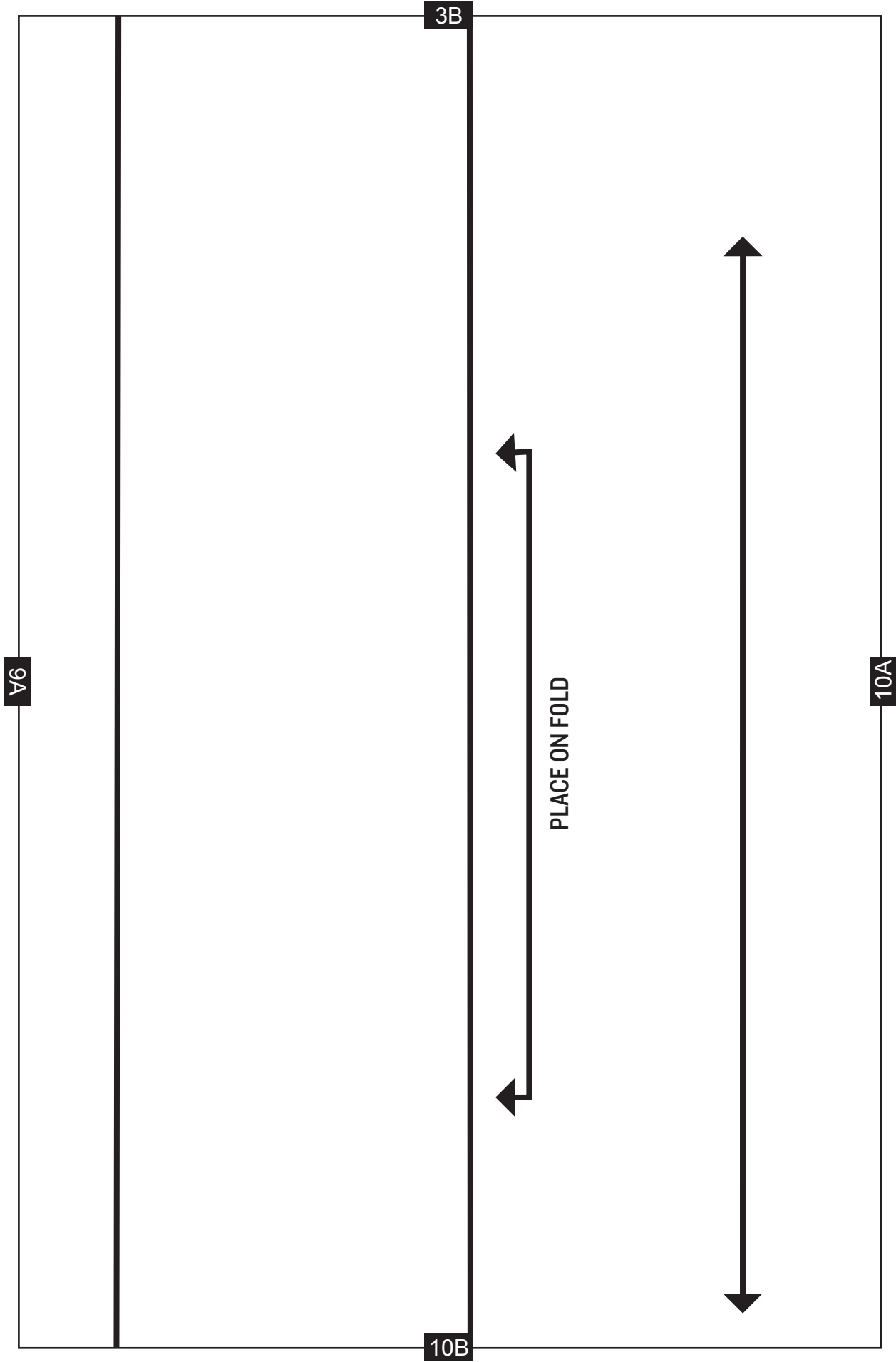
FRONTS

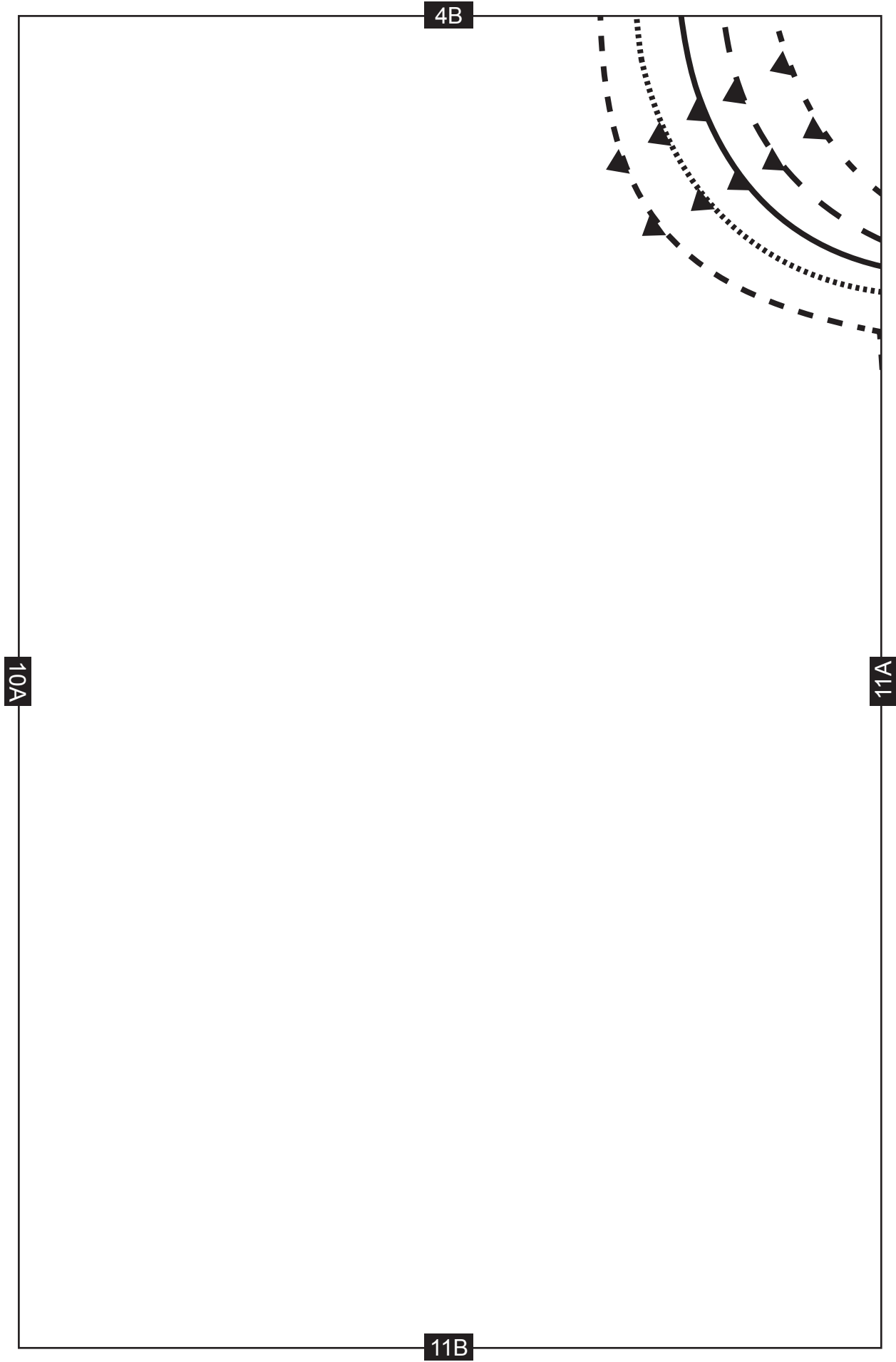
CUT 2

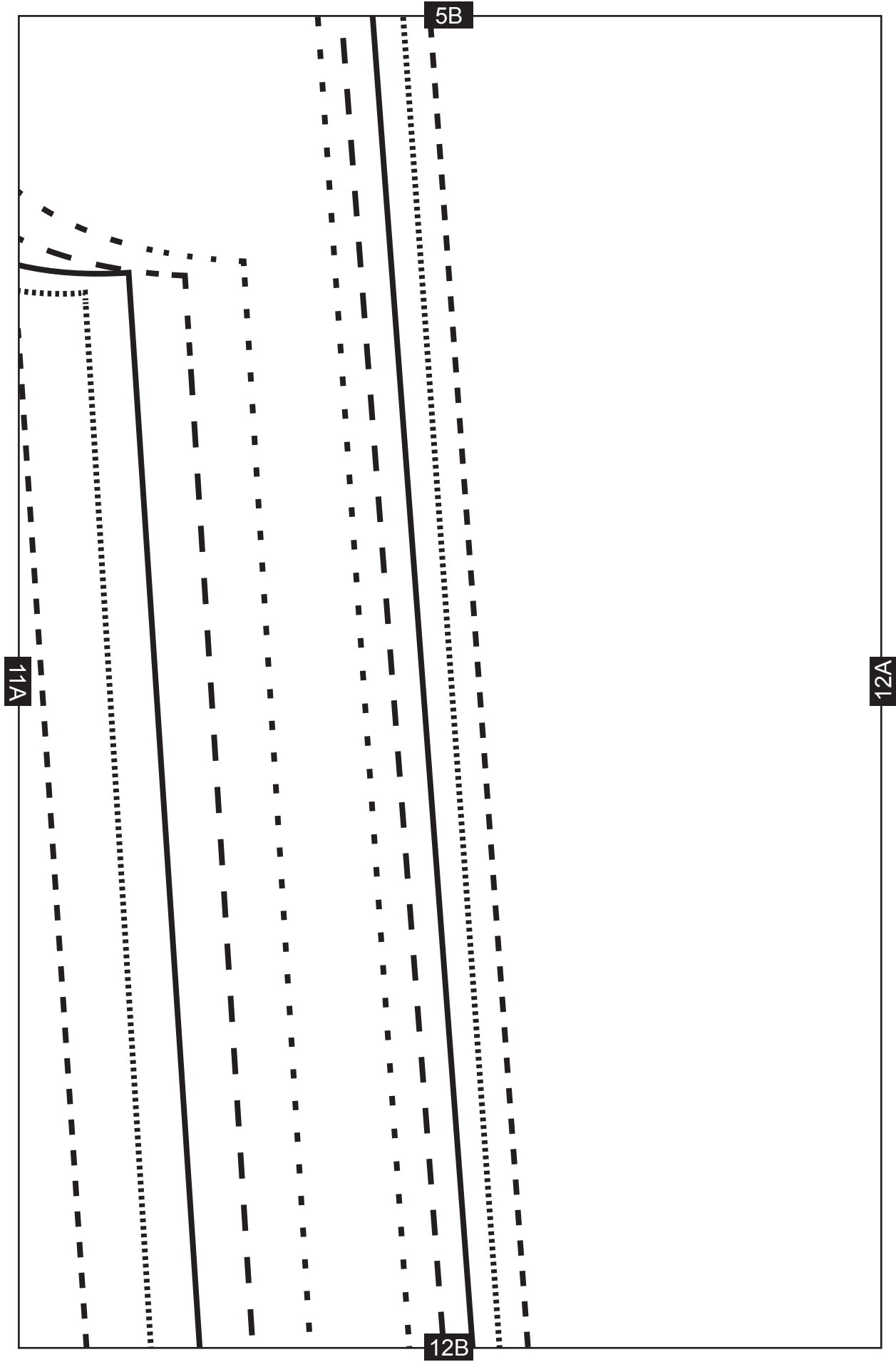
8A

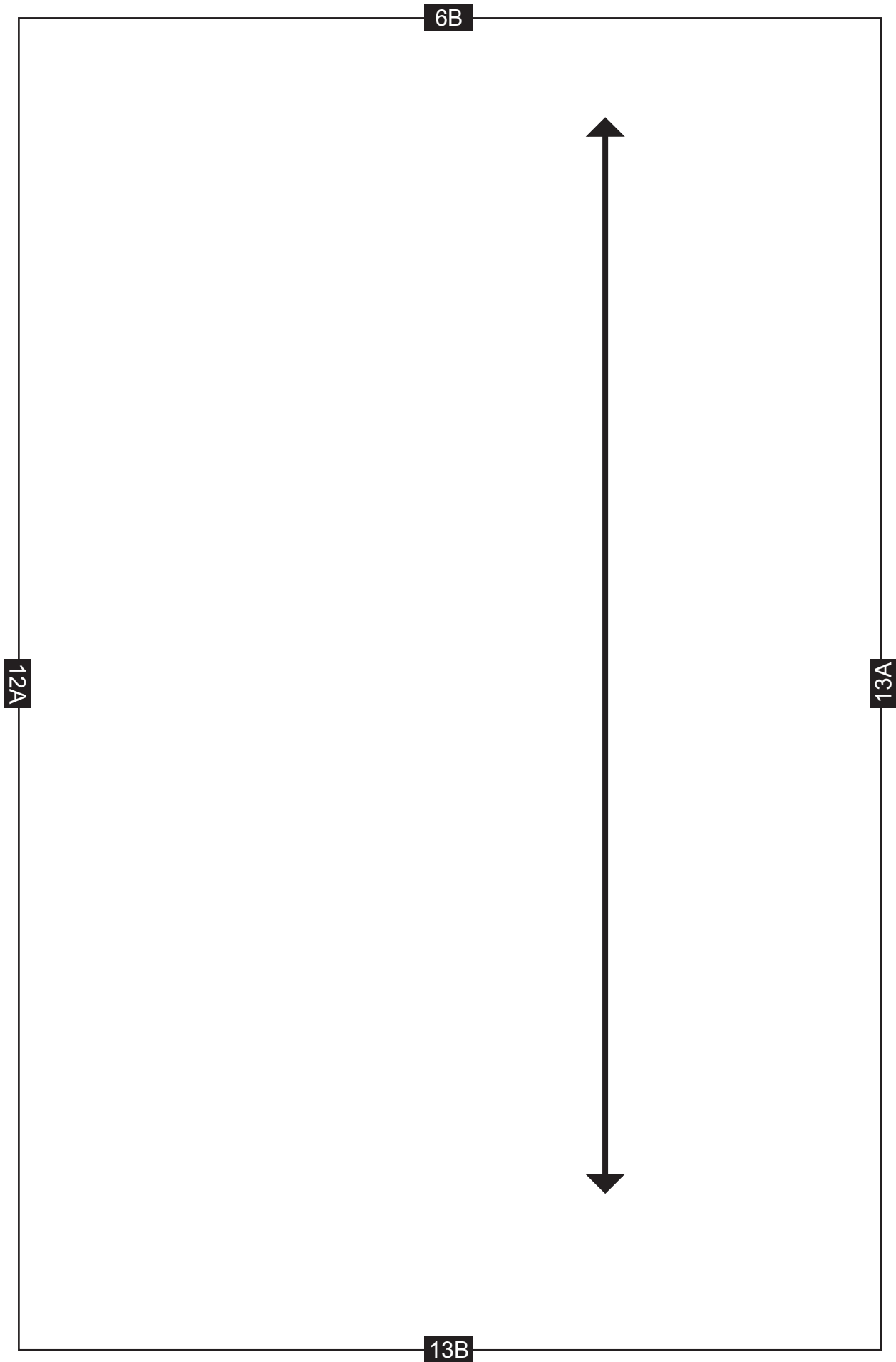
9A

9B





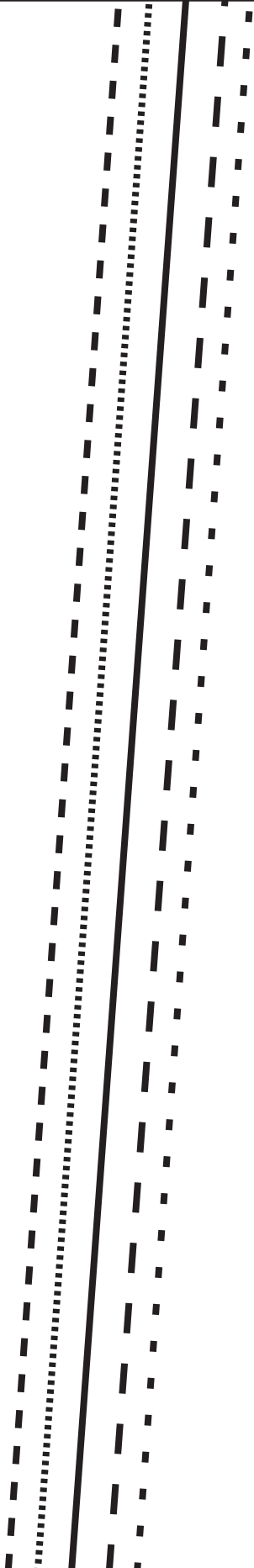




13A

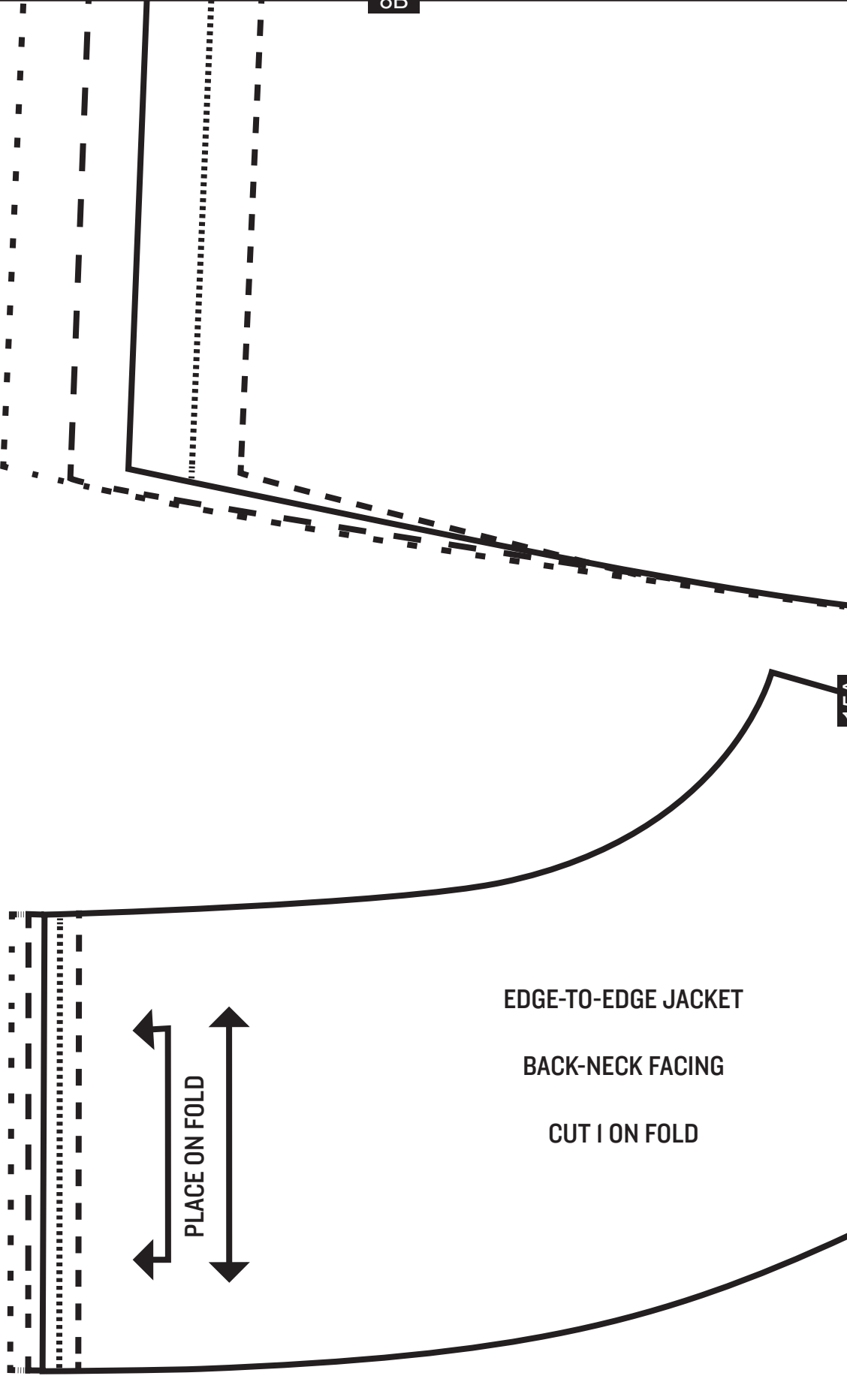
7B

14B



8B

15A



EDGE-TO-EDGE JACKET

BACK-NECK FACING

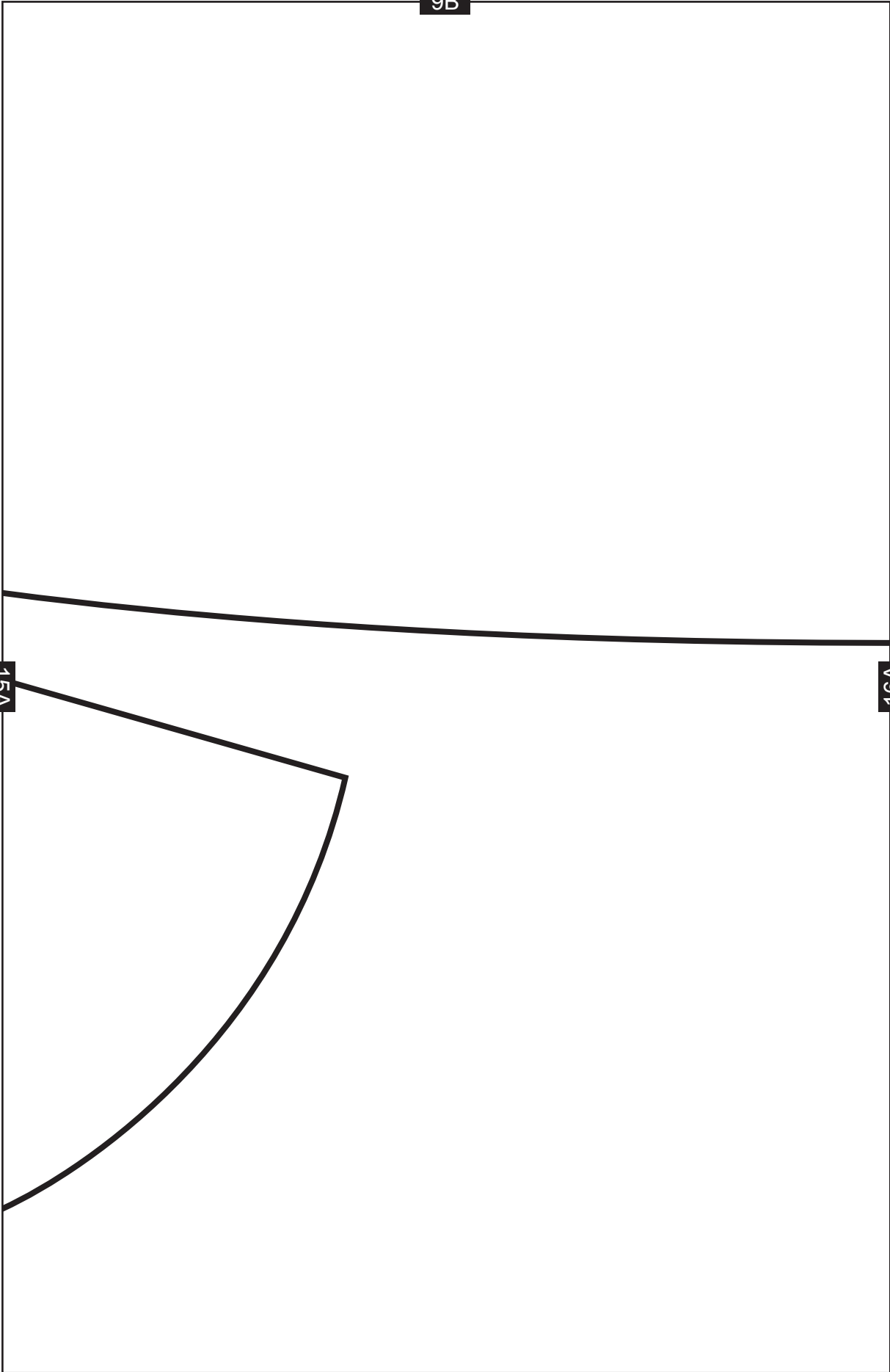
CUT 1 ON FOLD

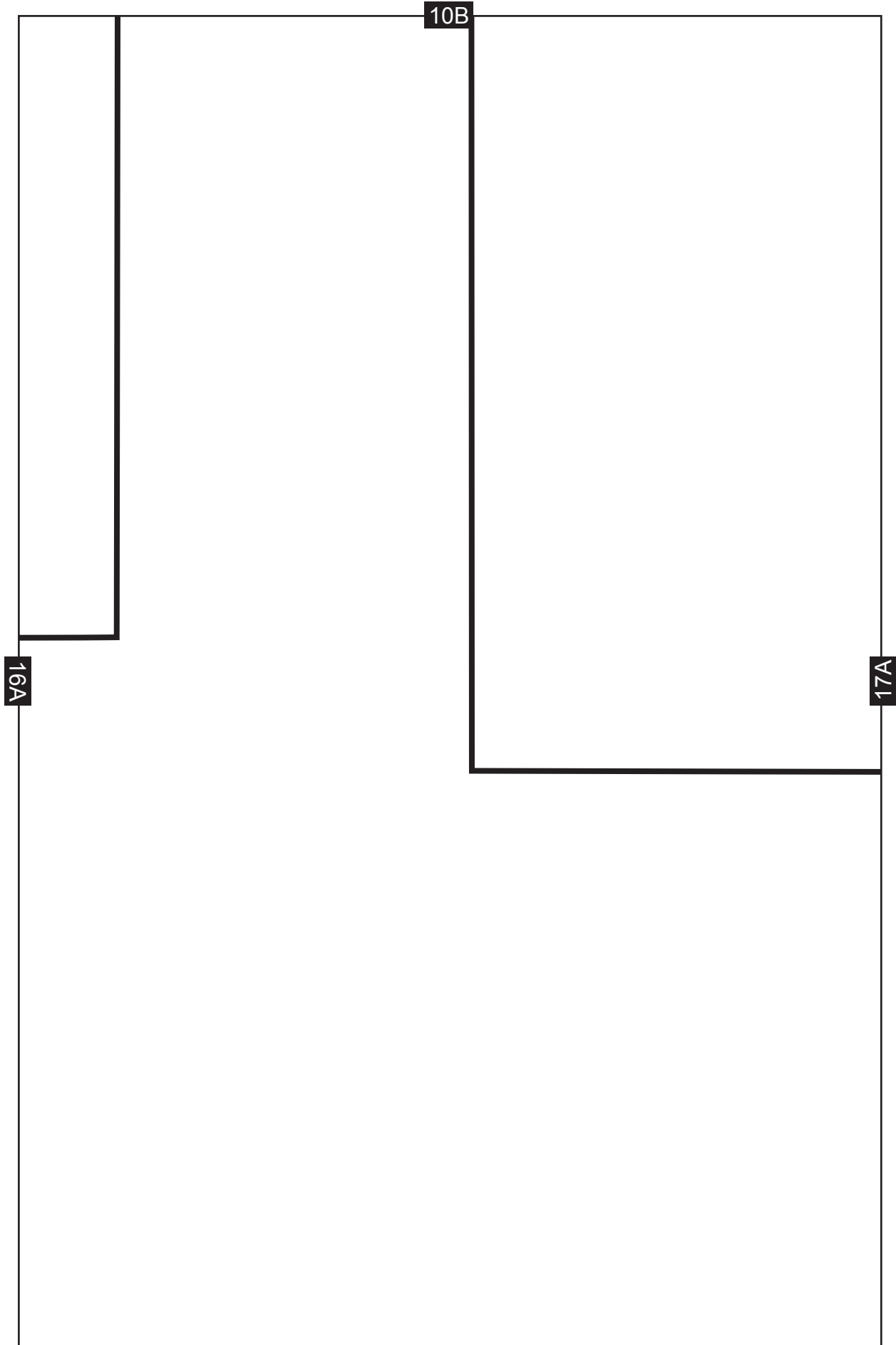


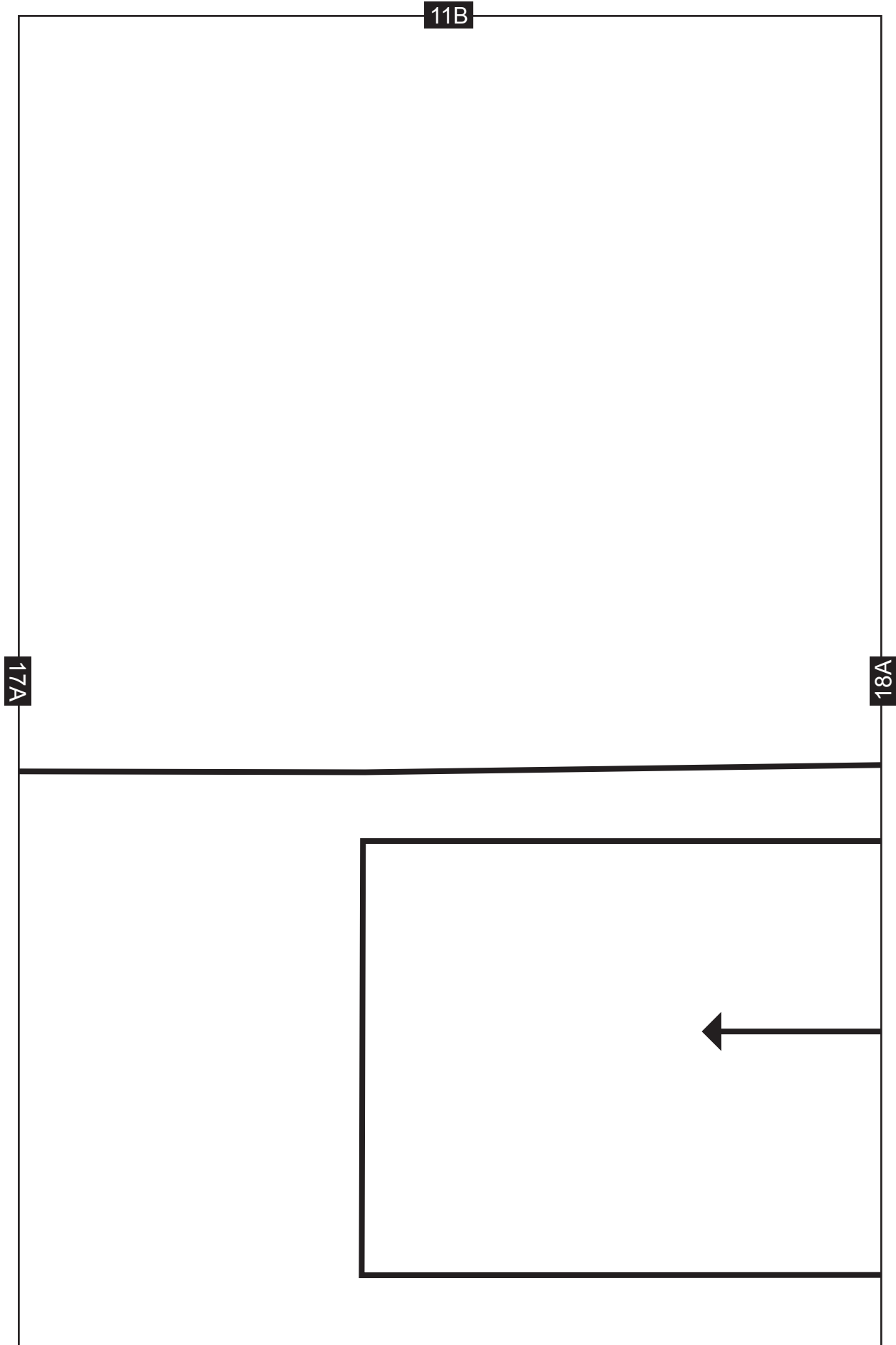
9B

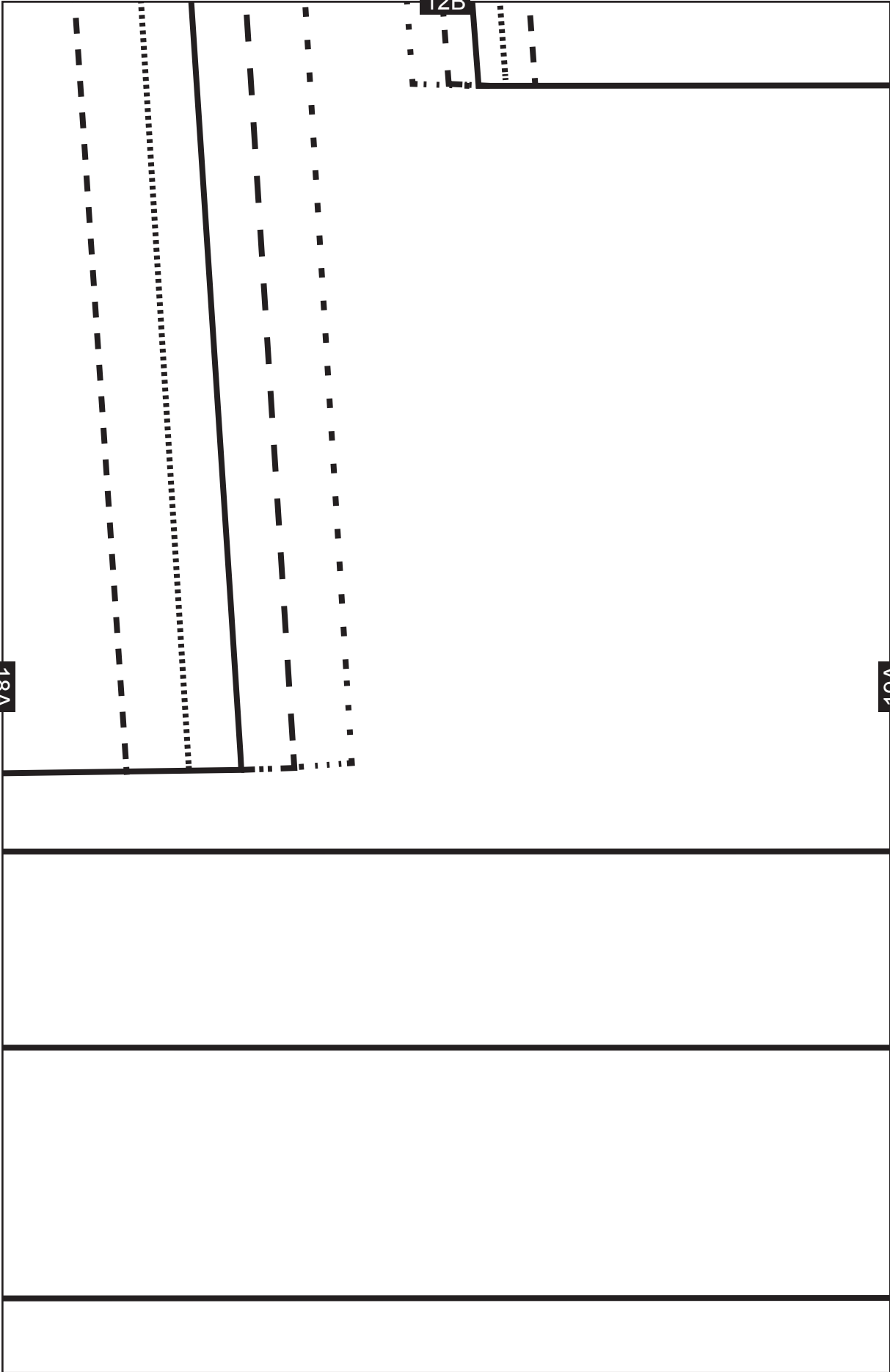
15A

16A









13B

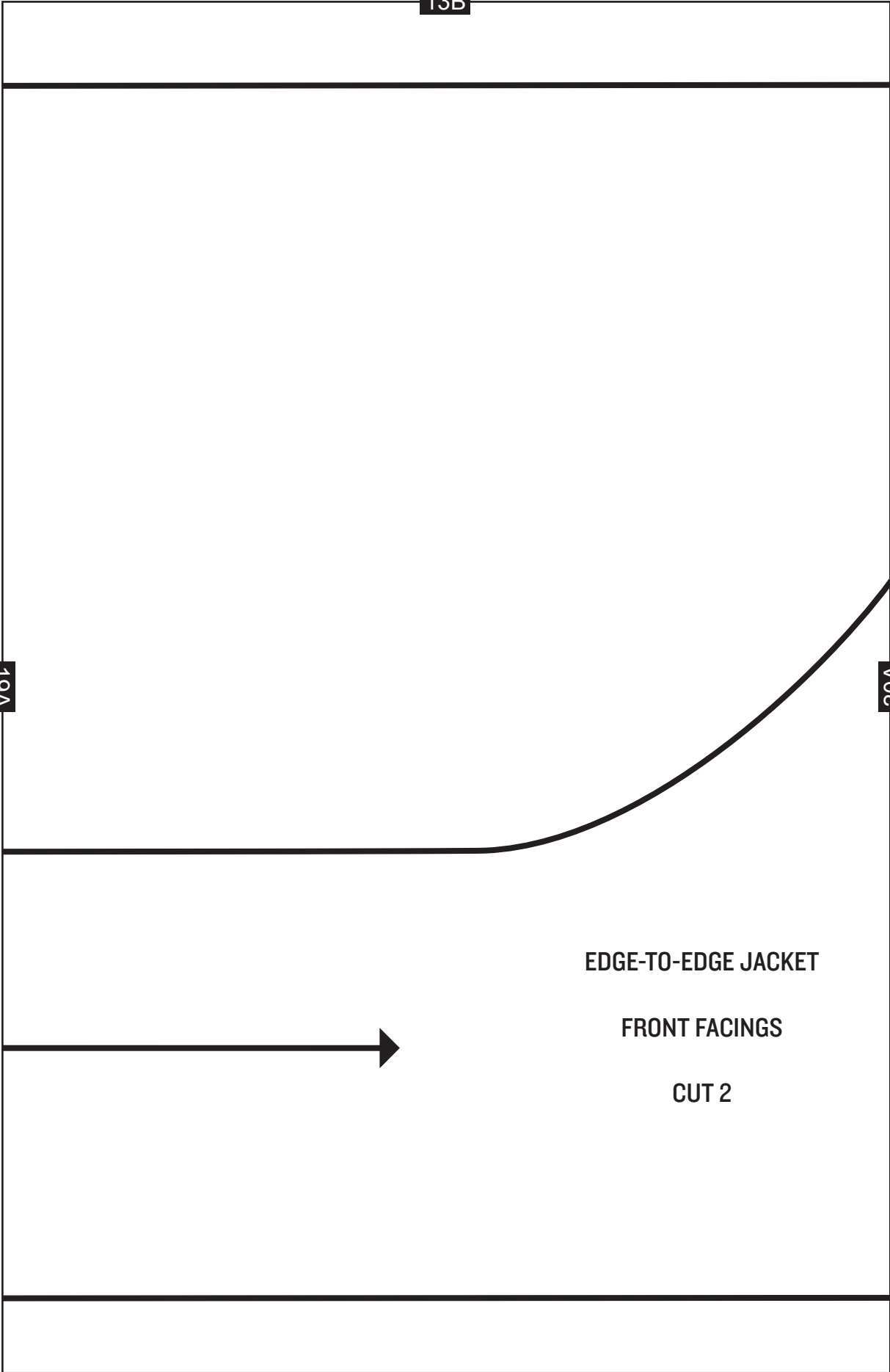
19A

20A

EDGE-TO-EDGE JACKET

FRONT FACINGS

CUT 2



14B

20A

